



Refrigerant Control Valve

The Control Valve provides on-off or open-loop proportional refrigerant control. This product is designed for 2-ton or 3.5-ton applications (R134a) and has a normally open failsafe design. Mounting patterns are fully configurable to the application. Shown below is a 2/2 valve packaging example, with two M4 mounting holes. Also compatible with R1234yf and R290.

***Technical Data:**

Environmental Temperature Range: -40°C to 125°C

Max Open area: 2.88mm²

Leakage: <1ml/min

Maximum Supply Pressure: 29 bar (burst to 90 bar)

Resistance: 5.5 Ω

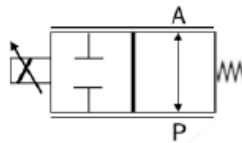
Operating Current: 0-1A proportional range

System Voltage: 12 V nominal (9V min)

Mass/Weight: 0.18 kg / 0.39 lbs.



2/2 Valve Schematic Example

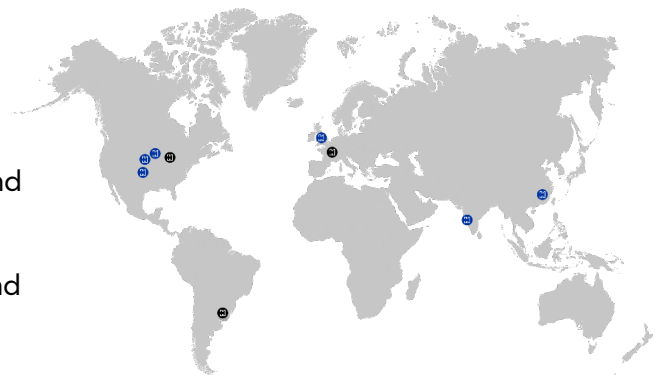


*Contact Husco engineering for customized performance solution.

Partner with Husco

Husco develops comprehensive automotive solutions that drive performance, including systems and components for electric, hybrid and internal combustion engine vehicles.

Husco is a global company with facilities around the world. Options for manufacturing locations include North America, Europe, and Asia.



Primary manufacturing location USMCA



Husco's Automotive team specializes in collaborative development of customized performance solutions. Contact the engineering team for your custom solution.

inquiries@huscoauto.com | (262) 513-4200 | [Husco.com](https://www.husco.com)