



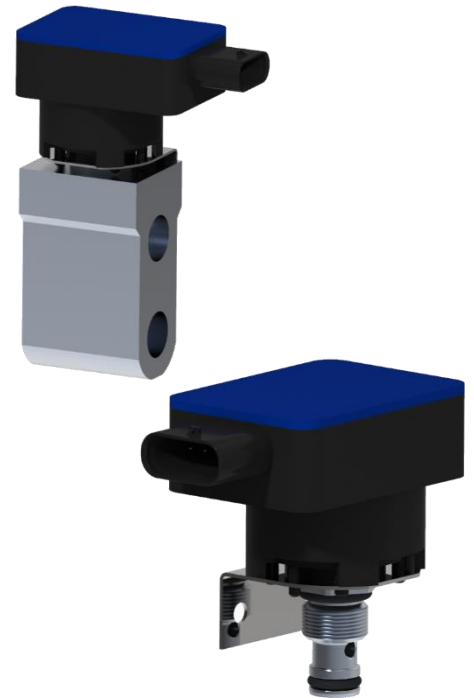
EXV

Proportional Throttling Valve

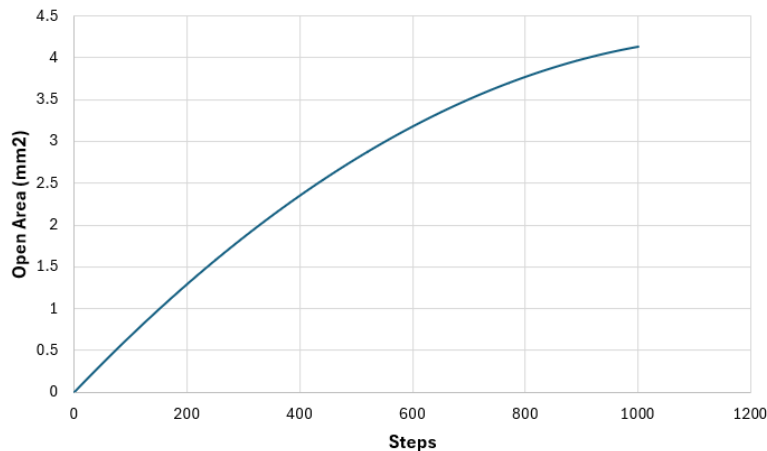
A throttling EXV with stepper motor drive designed for 2Ton and 4.5Ton (R1234yf) refrigerant systems. Standard design includes on-board controller. Available in cartridge or integrated manifold packages. Also compatible with R134a and R290.

*Technical Data:

Refrigerant Compatibility	R134a, R1234yf, R290
Continuous refrigerant fluid operating range	Min: -28°C to 140°C
Temporary refrigerant operating temperature	Max 150°C
Environment temperature range	-40°C to 125°C
Resting position	Optional, can be delivered as desired.
Power loss state	Maintain last powered position (No back-drive drivetrain)
Characteristic flow curve	2-Ton, 4.5-Ton available, see chart below
Leakage	<1ml/min
Open Area Characteristic Curve	See Chart (4.5T shown)
Max. operating pressure differential (closed)	3.0 MPa Max operating DP
Resolution	Min. 1/864 of the control range
Area per step (4.5T)	0.0047mm ² /step
Control Precision / Hysteresis	1% Hysteresis
Operating Voltage	9.5-16 VDC
Addressing, connector / pin	4-pin Configuration: 1 - GND 2 - LIN-IN 3 - LIN-OUT 4 - 12V / PWR



Open Area vs. Steps



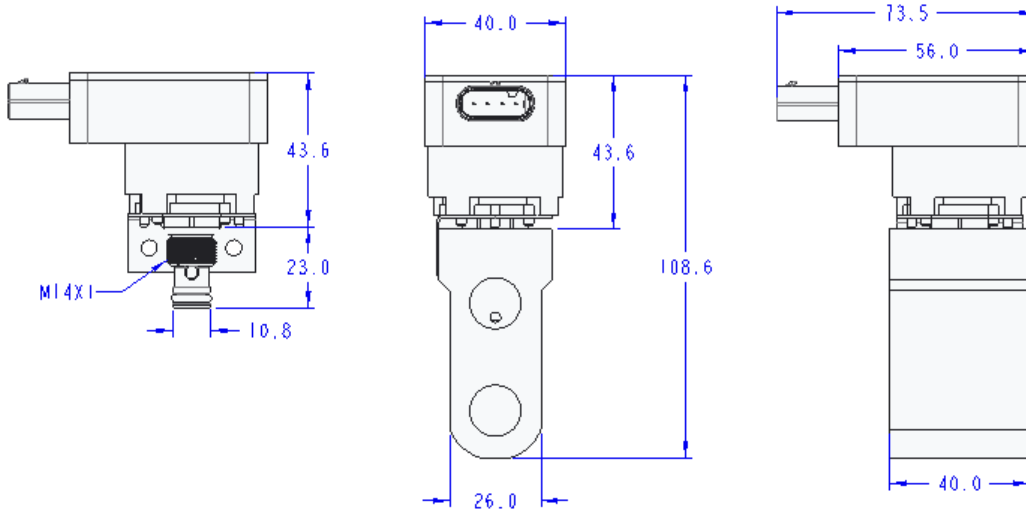
Husco's Automotive team specializes in collaborative development of customized performance solutions. Contact the engineering team for your custom solution.

inquiries@huscoauto.com | (262) 513-4200 | Husco.com



Packaging Size

With and without manifold comparison



Partner with Husco

Husco develops comprehensive automotive solutions that drive performance, including systems and components for electric, hybrid and internal combustion engine vehicles.

Husco is a global company with facilities around the world. Options for manufacturing locations include North America, Europe, and Asia.



Primary manufacturing location USMCA



Husco's Automotive team specializes in collaborative development of customized performance solutions. Contact the engineering team for your custom solution.

inquiries@huscoauto.com | (262) 513-4200 | Husco.com