



NAUTILUS EXV

Expansion Valve

The Nautilus Expansion Valve provides control of the expansion orifice open area through integrated closed loop positional control. This product is designed for 2-ton, 4-ton, and high-flow applications and has a normally open failsafe design. Mounting patterns are fully configurable to the application. Shown below is a 2/2 valve packaging example, with 2X M4 mounting holes.

***Technical Data:**

Environmental Temperature Range: -40°C to 25°C

Maximum Supply Pressure: 29 bar (burst to 90 bar) **Network Messaging:** LIN^

Resistance: 5.5 Ω

Current Range: 0-1 Amp

System Voltage: 12 V nominal (9V min)

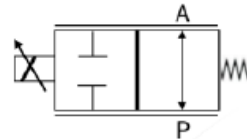
Mass/Weight: 0.18 kg / 0.39 lbs

^Messaging could be configured to CAN

*Contact Husco engineering for customized performance solution.



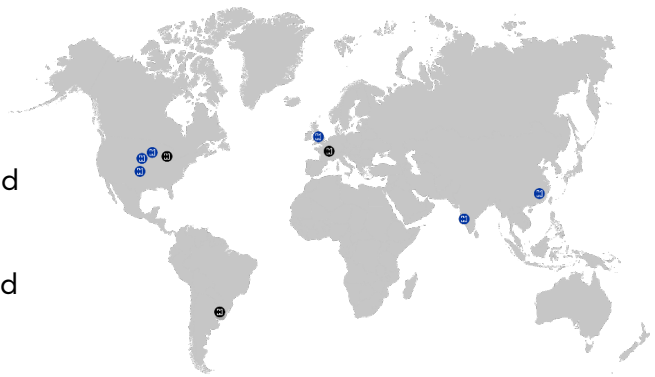
2/2 Valve Schematic Example



Partner with Husco

Husco develops comprehensive automotive solutions that drive performance, including systems and components for electric, hybrid and internal combustion engine vehicles.

Husco is a global company with facilities around the world. Options for manufacturing locations include North America, Europe, and Asia.



Husco's Automotive team specializes in collaborative development of customized performance solutions. Contact the engineering team for your custom solution.

inquiries@huscoauto.com | (262) 513-4200 | Husco.com



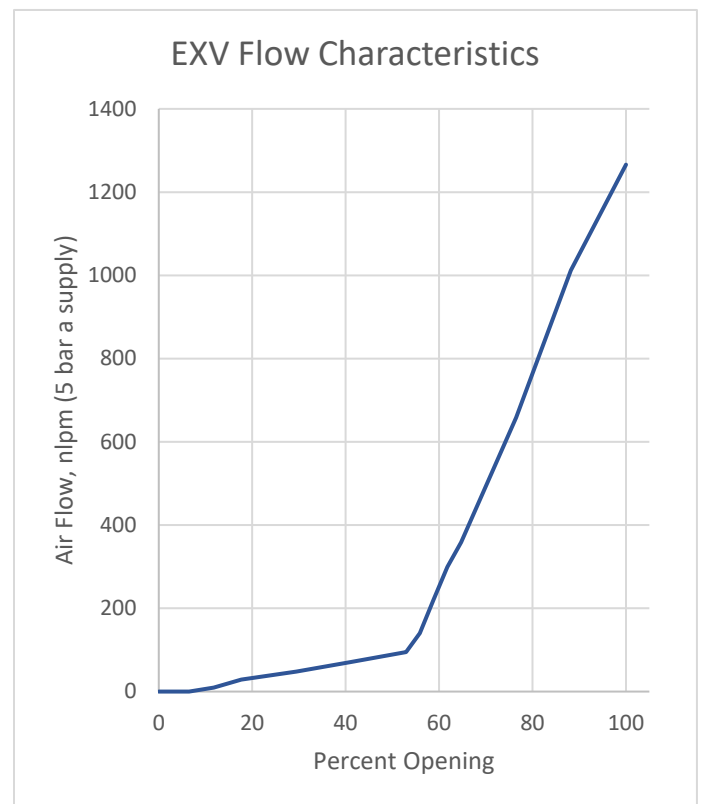
EXV+

HIGH FLOW EXV WITH THROTTLING AND BYPASS

An EXV with stepper motor driver integrated into straight-thru manifold. Integrated controller and position sensor (optional) allows for precise control and metering. A fully enclosed drivetrain eliminates external dynamic seals allowing reducing external leakage.

*Technical Data:

Refrigerant compatibility	R134a, R1234yf
Continuous refrigerant operating range	Min: -28°C Max: 140°C
Temporary refrigerant operating temperature	Max 150°C
Ambient temperature range	-40°C to 125°C
Pressure drop characteristic when fully open	< 0.04 MPa
Max. operating pressure differential (closed)	2.9MPa Max operating DP
Resting position	Optional, can be delivered as desired.
Power loss state	Maintain last powered position (No back-drive drivetrain)
Resolution	Min. 1/2000 of the control range
Control Precision / Hysteresis	1% Hysteresis
Operating Voltage	9.5-16 VDC
Addressing, connector / pin	4-pin Configuration: 1 - GND 2 - LIN-IN 3 - LIN-OUT 4 - 12V / PWR

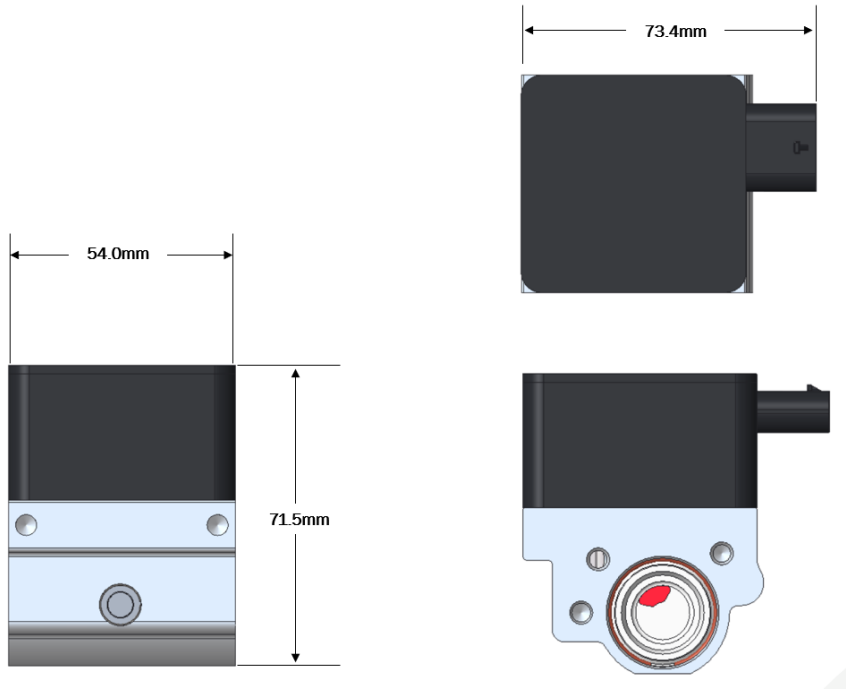


Husco's Automotive team specializes in collaborative development of customized performance solutions. Contact the engineering team for your custom solution.

inquiries@huscoauto.com | (262) 513-4200 | Husco.com



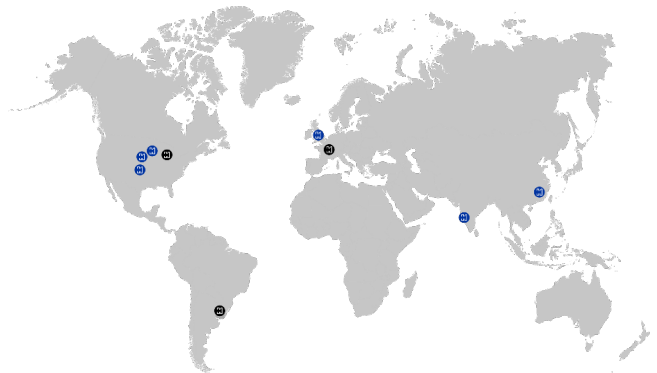
Packaging Size



Partner with Husco

Husco develops comprehensive automotive solutions that drive performance, including systems and components for electric, hybrid and internal combustion engine vehicles.

Husco is a global company with facilities around the world. Options for manufacturing locations include North America, Europe, and Asia.



Husco's Automotive team specializes in collaborative development of customized performance solutions. Contact the engineering team for your custom solution.

inquiries@huscoauto.com | (262) 513-4200 | Husco.com