

# VARIABLE BLEED SOLENOIDS



## Description:

Controls the pilot pressure to main valves of varying functions in the transmission's hydraulic control unit. Designed and manufactured in two configurations: Normally low control port pressure and normally high control port pressure. Solenoids are designed to be internally mounted within transmission. Special features within the solenoid provide exceptional robustness against contamination. Performance features include low leakage in low pressure state and solenoid damping optimized for fast response and minimal overshoot. There are filters located in supply port and control port.

## Technical Data:

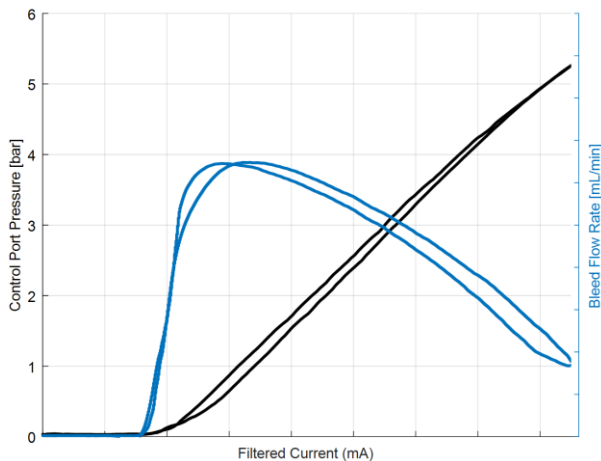
**Control Pressure:** 0 to 5 bar

**Coil Resistance:** 5.05  $\Omega$

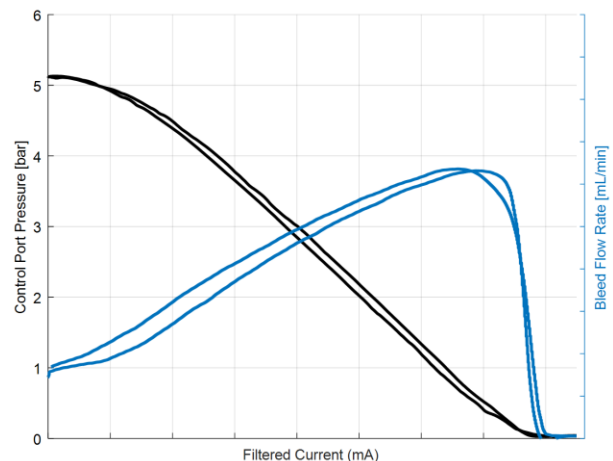
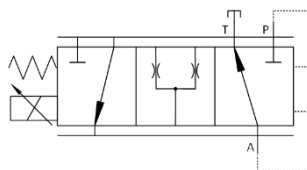
**Flow:** 1350 mL/min at 5.5 bar

**Off-Leakage:**  $\leq 100$  mL/min

## Typical PI Curves



NL



NH

