

# DC ACTUATOR



## Rotary Actuator with Internal Gearbox

### **Description:**

A rotary actuator that is capable of up to 2 Nm (17.7 in-lbs) continuous and 3.3 Nm (29.2 in-lbs) boost torque at 6 RPM. This actuator provides higher torque than comparable actuators on the market allowing for actuation of valves, dampers, mechanisms, or other automotive applications. A physical internal rotary sensor provides absolute position feedback, which is especially desirable for applications where accurate real-time position data is important for critical system-level protection and fail-safe functionality.

The actuator includes a brushed DC motor and gearbox to generate and transmit torque, and features an on-board controller which includes LIN communication, on-board rotary position sensing, position control, bootloader capability, and diagnostics. Gear drive is designed to minimize hold power. Flexible mounting and output options are available. Fail-safe position of the output shaft can be communicated in the event of communication loss or component failure.

### **\*Technical Data:**

**Rotation Range:** 355°

**Torque (nominal):** ±2Nm

**Torque (boost<sup>^</sup>):** ±3.3Nm

**Speed:** 6RPM

**Current (continuous):** 1A max

**Current (boost<sup>^</sup>):** 1.5A max

**NVH:** <50dbA

**LIN Communication:** LIN protocol 2.1 version, Baud rate 19.2 kbs

**Internal Rotary Sensor:** ±3% accuracy

<sup>^</sup>Duty cycle at Boost Torque Level expected to be <20%

### **\*Operating Limits:**

**Supply voltage nominal:** 12 ± 1 VDC

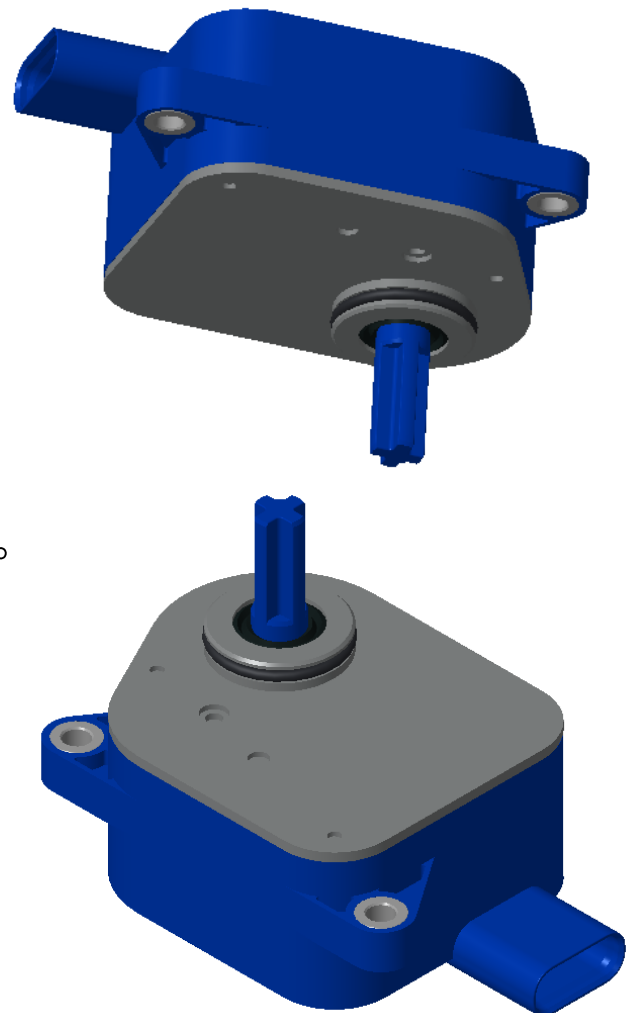
**Supply voltage range:** 9 to 16 VDC

**Temperature:** -40°C to 85°C

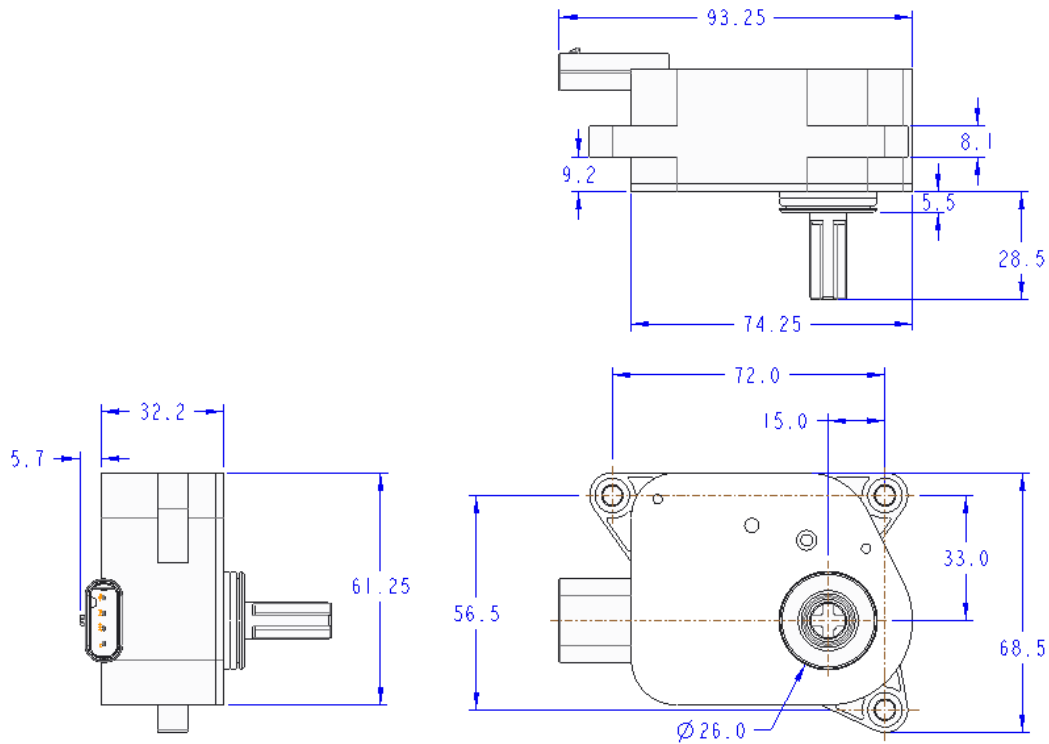
**Durability cycles:** 400,000 at 2Nm

**Ingress Protection:** IP6K7

\*Contact Husco Engineering for customized performance, sensing, mounting, communication, diagnostics, ingress protection, or connectors.



# Packaging Size



# Manufacturing

Husco is a global company with facilities around the world. Options for manufacturing locations include North America, Europe, and Asia.

- USA
- Mexico
- China
- Eastern Europe

