

BLDC ACTUATOR



Rotary Actuator with Internal Gearbox

Description:

A rotary actuator that is capable of up to 2 Nm (17.7 in-lbs) continuous and 3.3 Nm (29.2 in-lbs) boost torque at 6 RPM. This actuator provides higher torque than comparable actuators on the market allowing for actuation of valves, dampers, mechanisms, or other automotive applications. A physical internal rotary sensor provides absolute position feedback, which is especially desirable for applications where accurate real-time position data is important for critical system-level protection and fail-safe functionality.

The actuator includes a BLDC motor and gearbox to generate and transmit torque, and features an on-board controller which includes LIN communication, on-board rotary position sensing, position control, bootloader capability, and diagnostics. Flexible mounting and output options are available, and fail-safe position of the output shaft can be communicated in the event of communication loss or component failure.

***Technical Data:**

Rotation Range: 355°

Torque (nominal): ±2Nm

Torque (boost[^]): ±3.3Nm

Speed: 6RPM

Current (continuous): 0.55A max

Current (boost[^]): 0.75A max

NVH: <50dbA

LIN Communication: LIN protocol 2.1 version, Baud rate 19.2 kbs

Internal Rotary Sensor: ±3% accuracy

[^]Duty cycle at Boost Torque Level expected to be <20%

***Operating Limits:**

Supply voltage nominal: 12 ± 1 VDC

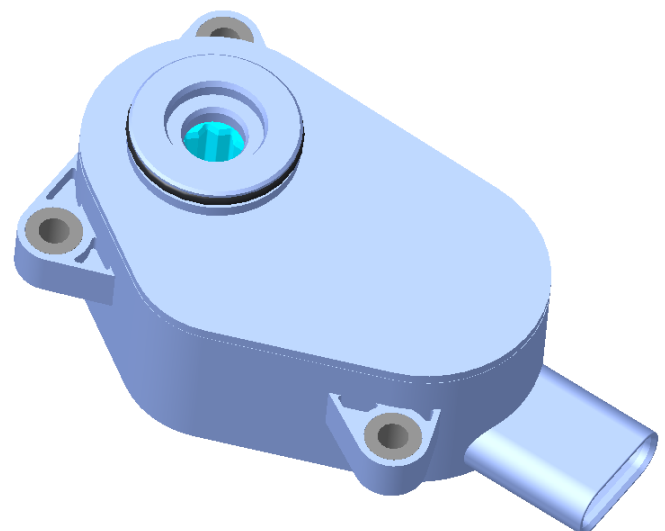
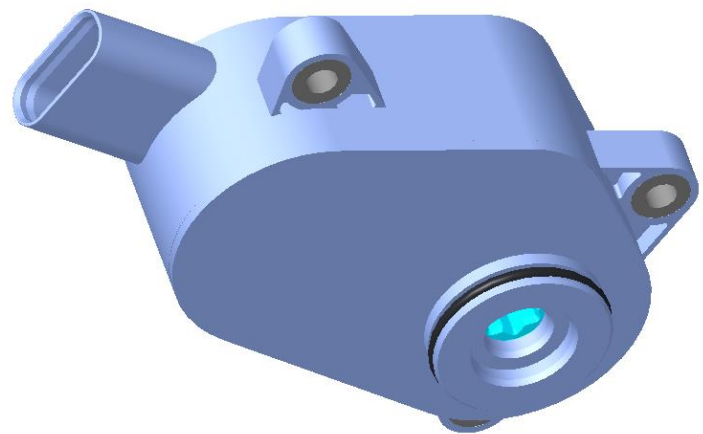
Supply voltage range: 9 to 16 VDC

Temperature: -40°C to 105°C

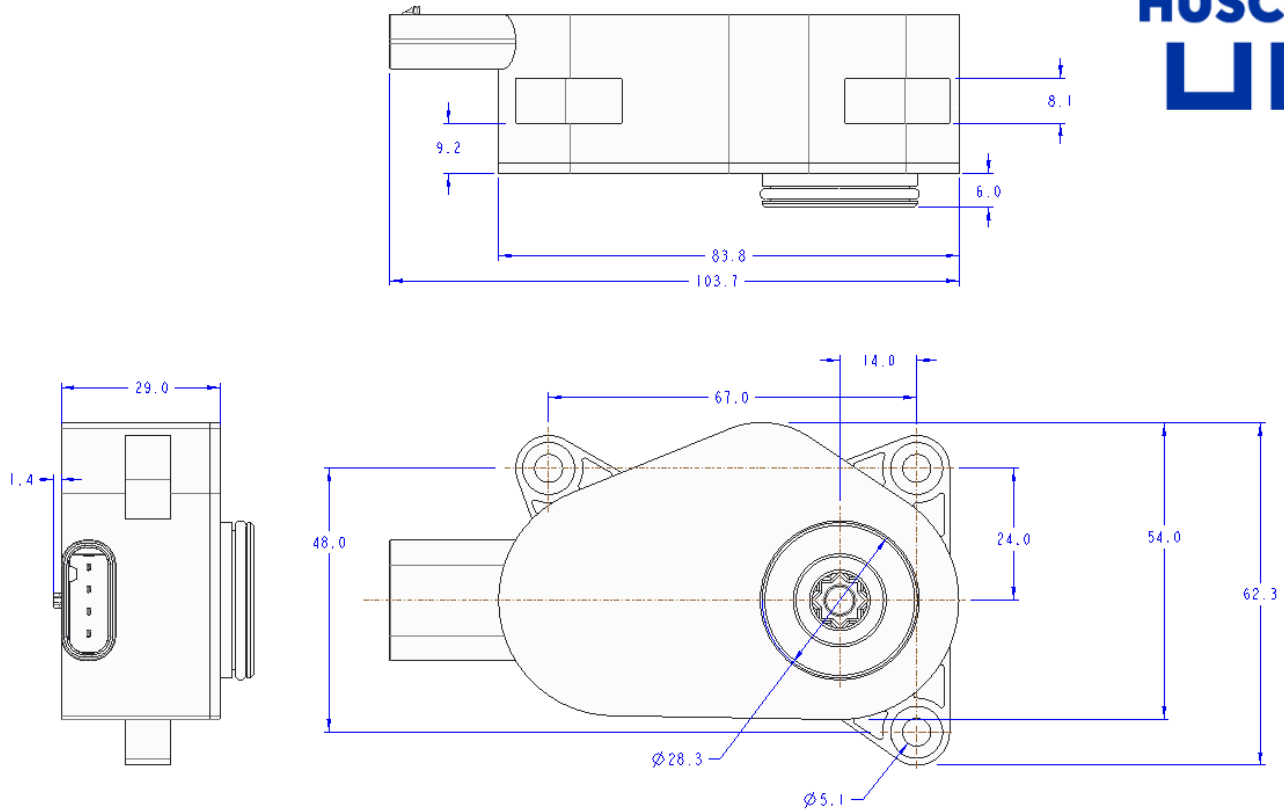
Durability cycles: 400,000 at 2Nm

Ingress Protection: IP6K7

*Contact Husco Engineering for customized performance, sensing, mounting, communication, diagnostics, ingress protection, or connectors.



Packaging Size



Manufacturing

Husco is a global company with facilities around the world. Options for manufacturing locations include North America, Europe, and Asia.

- USA
- Mexico
- China
- Eastern Europe

